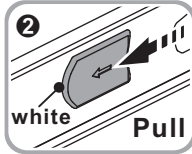


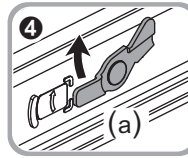
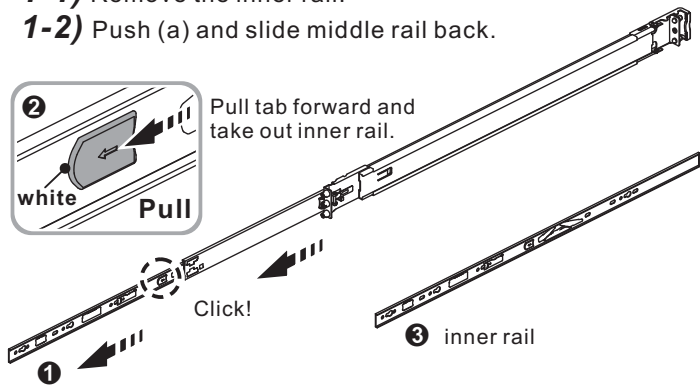
King Slide® — AA612610_2U Chassis

1-1) Remove the inner rail.

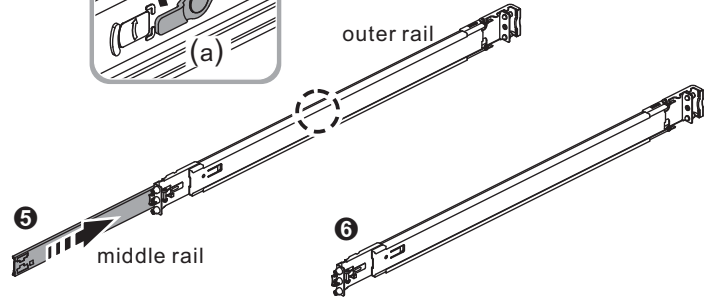
1-2) Push (a) and slide middle rail back.



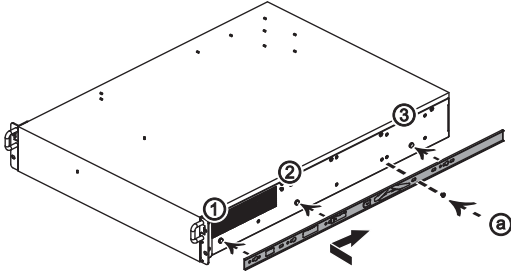
Pull tab forward and take out inner rail.



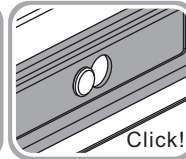
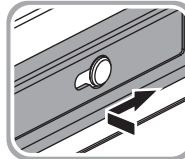
Push tab to slide the middle rail.



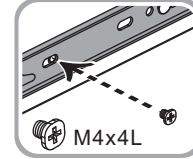
2) Install the inner rail onto the chassis.



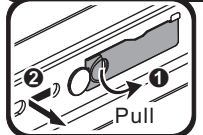
1 Key Hole ①-③



2 Screw Hole ④

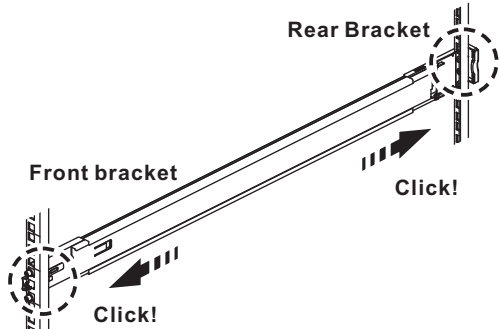


Detach Inner Rail from Standoff

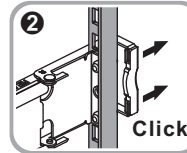
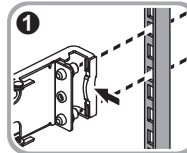


Pull the latch upward and remove the keyhole from standoff.

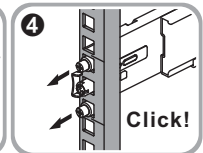
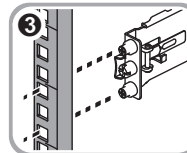
3) Fix the outer rail/bracket assembly to the frame.



Rear Bracket

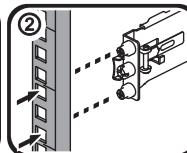
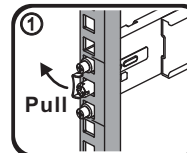


Front bracket

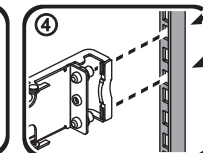
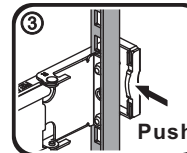


Detach Bracket from Rack Post

Front bracket



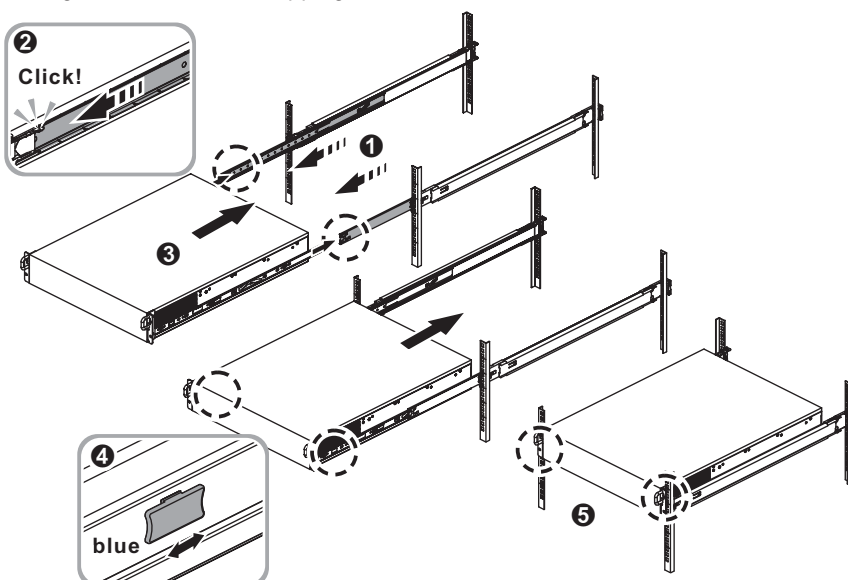
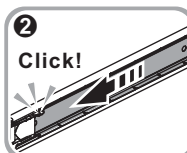
Rear Bracket



Note:
L,R side of rail are symmetrical.
Please repeat installation step for the other side.

4) Insert the chassis to complete the installation.

- 1 2** Pull the middle rail fully extended in lock position. Ensure ball bearing retainer is located at the front of the middle rail.
- 3** Insert the chassis into middle-outer rails.
- 4** When hit a stop, please push the release tab on middle rail.
- 5** Tighten chassis with shipping screws.



Remove the chassis from rack

- 1 2** Loosen shipping screw to pull out chassis.
- 3 4** Press the disconnect tab forward to remove chassis.

